

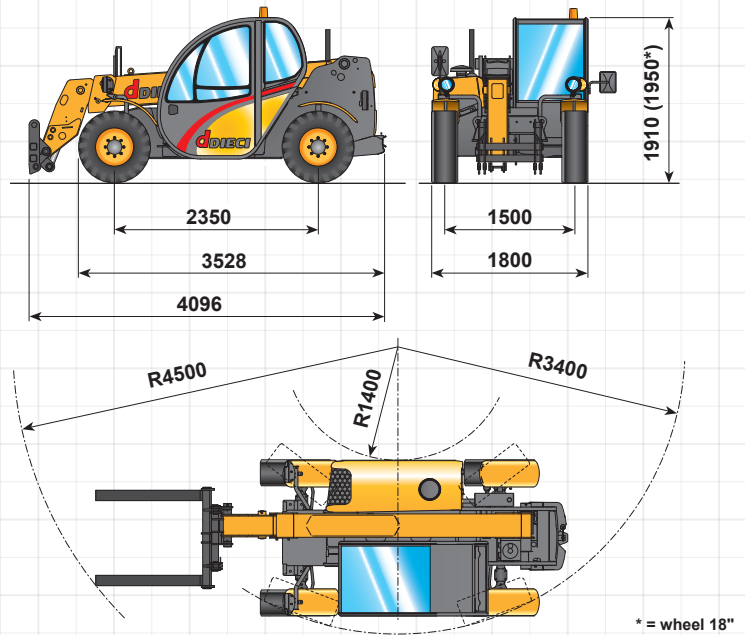
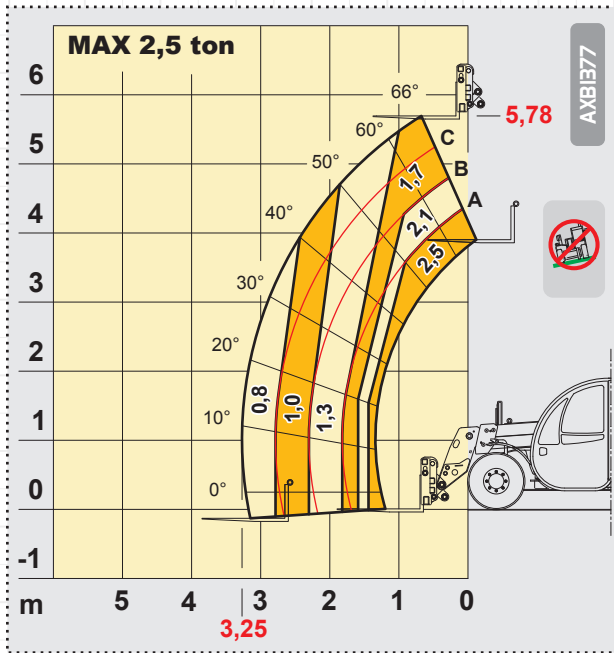
Apollo

25.6



macchine edili ed agricole
S.r.l.
d DIECI

Apollo 25.6



PERFORMANCES

Maximum capacity:	2.500 kg
Capacity at maximum height on tyres:	1.700 kg
Maximum capacity boom on tyres:	800 kg
Maximum lifting height on tyres:	5,78 m
Maximum horizontal boom extension:	3,25 m
Boom at maximum height:	0,67 m
Angle of fork arching:	129°
Tearing force:	4.400 daN
Maximum slope for overtaking:	40 %
Total empty weight:	4.800 kg
Max speed:	26 km/h *



ENGINE

ENGINE YANMAR 4TNV98 - 52 kW	
Maximum power:	52 kW (71 hp) at 2500 rpm
Type, injection:	four-stroke engine diesel, direct
Cylinders number and layout:	4, vertical in line
Displacement:	3319 cm ³
Cooling system:	liquid

ENGINE YANMAR 4TNV98T - 62 kW	
Maximum power:	62 kW (85 hp) at 2500 rpm
Type, injection:	four-stroke engine diesel, direct
Cylinders number and layout:	4, vertical in line
Displacement:	3319 cm ³ - Turbo compressor
Cooling system:	liquid



TRANSMISSION

Transmission:	Hydrostatic with variable capacity pump
Hydraulic engine:	with automatic change
Gear reversing:	electro - hydraulic
Inching pedal for controlled forward movement.	



REFUELLING (litre)

Hydraulic circuit:	70
Fuel tank:	80



STANDARD DEVICES

Anti-tipping device with block for hazardous movements.
 Closed soundproof homologated cab ROPS - FOPS, with heating.
 Hydraulic socket for possible accessories on boom head.
 Self-locking differential on front axle.



HYDRAULIC CIRCUIT

Gear pump with capacity at speed:	80 lt/1'
Max working pressure:	200 bar
Distributor controls with joystick:	3 in 1



DIFFERENTIAL AXLES

Steering axles:	2, with 4 epicycloidal reduction gears
Type of steering:	4 wheels / transversal / 2 wheels
Front axle:	rigid
Rear axle:	oscillating
Service brake:	oil bath on the front axle
Negative parking brake.	



TYRES

Tyres:	12 - 16.5
Alternative:	12.0/75 - 18



OPTIONAL AND ACCESSORIES

Optional and Accessories: see the relevant catalogue.

The information contained in the present publication are only intended as an indication; the models described may be modified, without notice, by the manufacturer, drawings and photographs may refer to optional equipment or to particular specifications for other countries. For any further information, please contact DIECI headquarters at the address given below.

(Cod. AXE3095 - 9/2006 v1 - ENG)

DIECI S.r.l.
 Via E. Majorana, 2/4 - 42027 Montecchio Emilia (RE)
 Tel. +39 0522 869611 - Fax +39 0522 869744
 www.dieci.com - mailbox@dieci.com

d DIECI
 macchine edili ed agricole
 S.r.l.